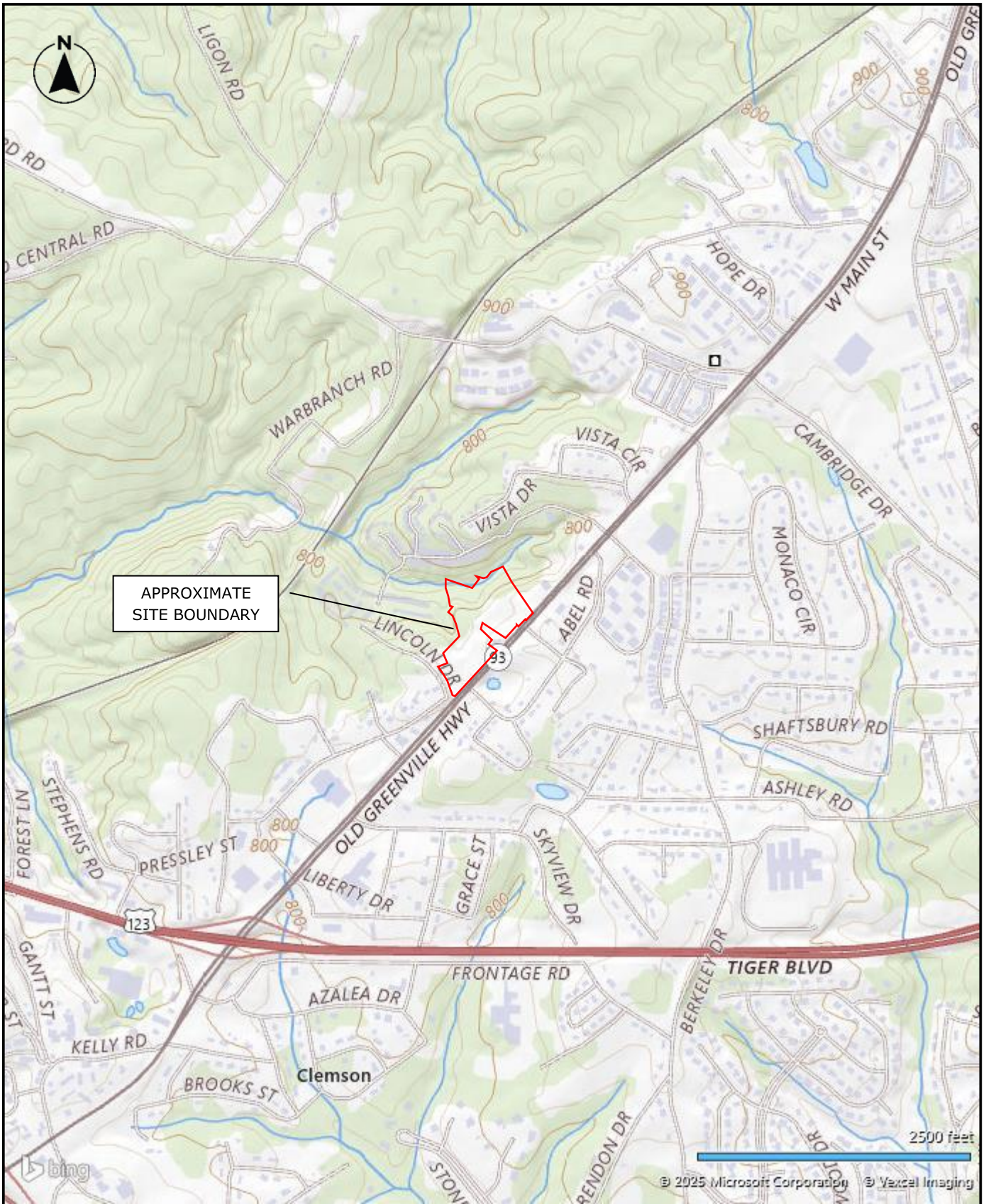


APPENDIX A

EXHIBIT 1: USGS TOPO BASE LAYER

EXHIBIT 2: SITE DIAGRAM



Project No.	86257021
Scale:	AS SHOWN
Client:	Mercy Housing
Date:	March 2025

Terracon

72 Pointe Cir
Greenville, SC 29615-3506

TOPOGRAPHIC MAP
Old Greenville Highway Apartments 602 Old Greenville Highway Clemson, SC

Exhibit
1



Project No.	86257021
Scale:	AS SHOWN
Client:	Mercy Housing
Date:	March 2025



72 Pointe Cir
Greenville, SC 29615-3506

SITE EXPLORATION

Old Greenville Highway Apartments
602 Old Greenville Highway
Clemson, SC

Exhibit

A-1

APPENDIX B
SITE PHOTOGRAPHS



Photo 1 View from the northern portion of the site looking south



Photo 2 View of the wooded portion of the site located to the north



Photo 3 View of powerline easement looking north



Photo 4 View of future stormwater drain onsite



Photo 5 View of manhole cover onsite



Photo 6 View of the western portion of the site



Photo 7 View of adjoining residence to the west



Photo 8 View of Old Greenville Hwy followed by Raven Ln



Photo 9 View of adjoining property looking east.

APPENDIX C

**HISTORICAL DOCUMENTATION AND USER
QUESTIONNAIRE**



HISTORICAL AERIALS

Project Property: Old Greenville Highway Apartments

602 Old Greenville Highway
Clemson South Carolina 29631

Project No.: 86257021

Requested By: Terracon

Order No: 25030600062

Date Completed: March 07, 2025

Aerial Maps included in this report are produced by the sources listed above and are to be used for research purposes including a phase I report. Maps are not to be resold as commercial property. ERIS provides no warranty of accuracy or liability. The information contained in this report has been produced using aerial photos listed in above sources by ERIS Information Inc. (in the US) and ERIS Information Limited Partnership (in Canada), both doing business as 'ERIS'. The maps contained in this report do not purport to be and do not constitute a guarantee of the accuracy of the information contained herein. Although ERIS has endeavored to present information that is accurate, ERIS disclaims, any and all liability for any errors, omissions, or inaccuracies in such information and data, whether attributable to inadvertence, negligence or otherwise, and for any consequences arising therefrom. Liability on the part of ERIS is limited to the monetary value paid for this report.

Environmental Risk Information Services

A division of Glacier Media Inc.

1.866.517.5204 | info@erisinfo.com | erisinfo.com

Date	Source	Scale	Comments
1938	Agricultural Stabilization & Conserv. Service	1" = 500'	
1943	Agricultural Stabilization & Conserv. Service	1" = 500'	
1947	United States Geological Survey	1" = 500'	
1959	Agricultural Stabilization & Conserv. Service	1" = 500'	
1965	Agricultural Stabilization & Conserv. Service	1" = 500'	
1970	Agricultural Stabilization & Conserv. Service	1" = 500'	
1982	United States Geological Survey	1" = 500'	
1994	United States Geological Survey	1" = 500'	
2005	United States Department of Agriculture	1" = 500'	
2006	United States Department of Agriculture	1" = 500'	
2009	United States Department of Agriculture	1" = 500'	
2011	United States Department of Agriculture	1" = 500'	
2013	United States Department of Agriculture	1" = 500'	
2015	United States Department of Agriculture	1" = 500'	
2017	United States Department of Agriculture	1" = 500'	
2019	United States Department of Agriculture	1" = 500'	
2021	United States Department of Agriculture	1" = 500'	
2023	Maxar Technologies	1" = 500'	

Environmental Risk Information Services

A division of Glacier Media Inc.

1.866.517.5204 | info@erisinfo.com | erisinfo.com



Project Manager:	Project No. 86257021	 72 Pointe Cir Greenville, South Carolina 296	AERIAL PHOTO (1938 - ASCS)	Appendix
Drawn by:	Scale: 1" = 2000'		Old Greenville Highway Apartments 602 Old Greenville Highway Clemson, South Carolina 29631	C
Checked by:	File Name: 25030600062			
Approved by:	Date: 2025-03-06			



Project Manager:	Project No. 86257021	 72 Pointe Cir Greenville, South Carolina 296	AERIAL PHOTO (1943 - ASCS)	Appendix
Drawn by:	Scale: 1" = 2000'		Old Greenville Highway Apartments 602 Old Greenville Highway Clemson, South Carolina 29631	C
Checked by:	File Name: 25030600062			
Approved by:	Date: 2025-03-06			




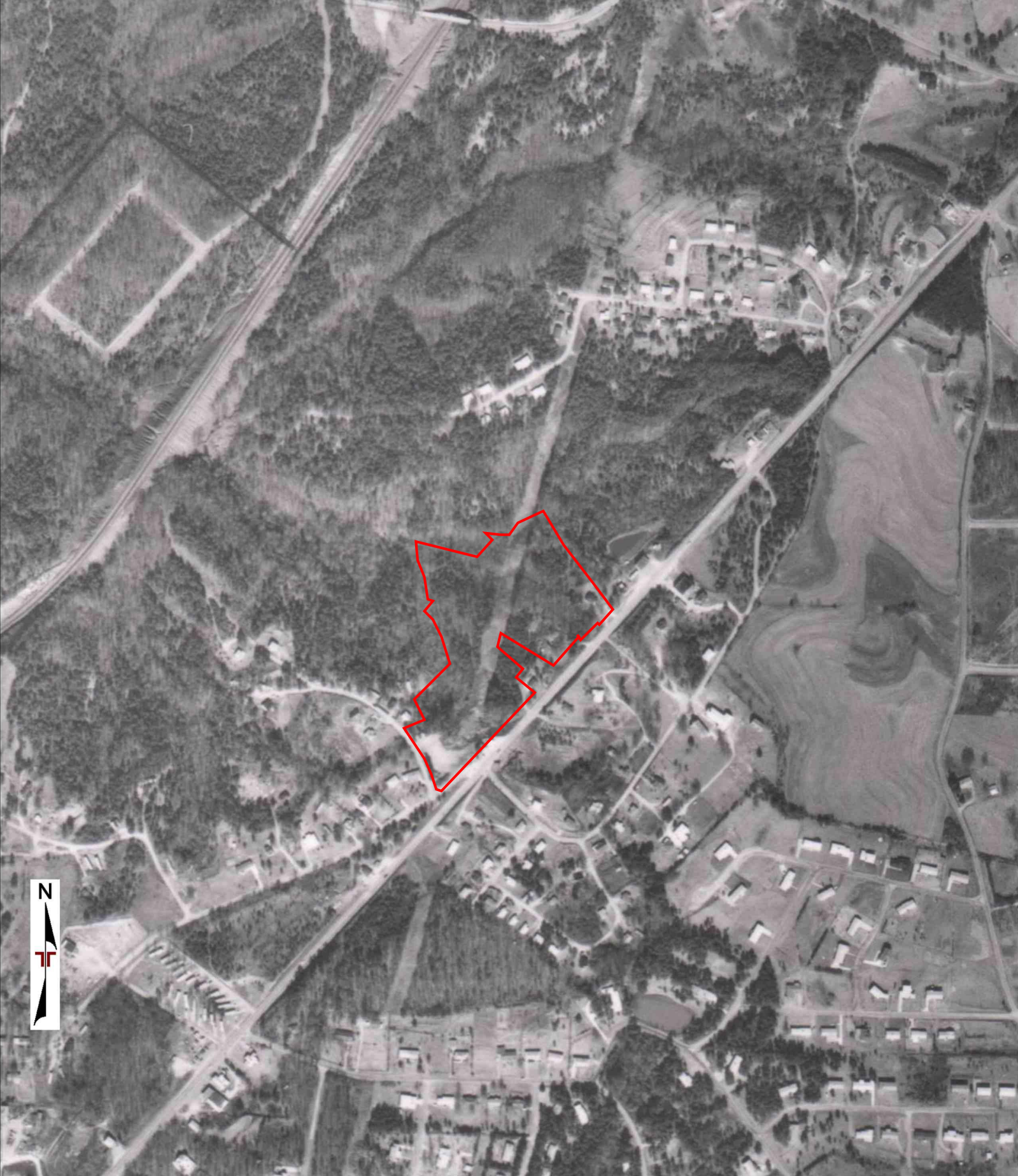
Project Manager:	Project No. 86257021	 72 Pointe Cir Greenville, South Carolina 296	AERIAL PHOTO (1947 - USGS)	Appendix
Drawn by:	Scale: 1" = 2000'		Old Greenville Highway Apartments 602 Old Greenville Highway Clemson, South Carolina 29631	C
Checked by:	File Name: 25030600062			
Approved by:	Date: 2025-03-06			



Project Manager:	Project No. 86257021	 72 Pointe Cir Greenville, South Carolina 296	AERIAL PHOTO (1959 - ASCS)	Appendix
Drawn by:	Scale: 1" = 2000'		Old Greenville Highway Apartments 602 Old Greenville Highway Clemson, South Carolina 29631	C
Checked by:	File Name: 25030600062			
Approved by:	Date: 2025-03-06			




Project Manager:	Project No. 86257021	 72 Pointe Cir Greenville, South Carolina 296	AERIAL PHOTO (1965 - ASCS)	Appendix
Drawn by:	Scale: 1" = 2000'		Old Greenville Highway Apartments 602 Old Greenville Highway Clemson, South Carolina 29631	C
Checked by:	File Name: 25030600062			
Approved by:	Date: 2025-03-06			



Project Manager:	Project No. 86257021	 72 Pointe Cir Greenville, South Carolina 296	AERIAL PHOTO (1970 - ASCS)	Appendix
Drawn by:	Scale: 1" = 2000'		Old Greenville Highway Apartments 602 Old Greenville Highway Clemson, South Carolina 29631	C
Checked by:	File Name: 25030600062			
Approved by:	Date: 2025-03-06			



Project Manager:	Project No. 86257021	 72 Pointe Cir Greenville, South Carolina 296	AERIAL PHOTO (1982 - USGS)	Appendix
Drawn by:	Scale: 1" = 2000'		Old Greenville Highway Apartments 602 Old Greenville Highway Clemson, South Carolina 29631	C
Checked by:	File Name: 25030600062			
Approved by:	Date: 2025-03-06			




Project Manager:	Project No. 86257021	 72 Pointe Cir Greenville, South Carolina 296	AERIAL PHOTO (1994 - USGS)	Appendix
Drawn by:	Scale: 1" = 2000'		Old Greenville Highway Apartments 602 Old Greenville Highway Clemson, South Carolina 29631	C
Checked by:	File Name: 25030600062			
Approved by:	Date: 2025-03-06			



Project Manager:	Project No. 86257021	 72 Pointe Cir Greenville, South Carolina 296	AERIAL PHOTO (2005 - USDA)	Appendix
Drawn by:	Scale: 1" = 2000'		Old Greenville Highway Apartments 602 Old Greenville Highway Clemson, South Carolina 29631	C
Checked by:	File Name: 25030600062			
Approved by:	Date: 2025-03-06			



Project Manager:	Project No. 86257021	 72 Pointe Cir Greenville, South Carolina 296	AERIAL PHOTO (2006 - USDA)	Appendix
Drawn by:	Scale: 1" = 2000'		Old Greenville Highway Apartments 602 Old Greenville Highway Clemson, South Carolina 29631	C
Checked by:	File Name: 25030600062			
Approved by:	Date: 2025-03-06			



Project Manager:	Project No. 86257021	 72 Pointe Cir Greenville, South Carolina 296	AERIAL PHOTO (2009 - USDA)	Appendix
Drawn by:	Scale: 1" = 2000'		Old Greenville Highway Apartments 602 Old Greenville Highway Clemson, South Carolina 29631	C
Checked by:	File Name: 25030600062			
Approved by:	Date: 2025-03-06			




Project Manager:	Project No. 86257021	 72 Pointe Cir Greenville, South Carolina 296	AERIAL PHOTO (2011 - USDA)	Appendix
Drawn by:	Scale: 1" = 2000'		Old Greenville Highway Apartments 602 Old Greenville Highway Clemson, South Carolina 29631	C
Checked by:	File Name: 25030600062			
Approved by:	Date: 2025-03-06			



Project Manager:	Project No. 86257021	 72 Pointe Cir Greenville, South Carolina 296	AERIAL PHOTO (2013 - USDA)	Appendix
Drawn by:	Scale: 1" = 2000'		Old Greenville Highway Apartments 602 Old Greenville Highway Clemson, South Carolina 29631	C
Checked by:	File Name: 25030600062			
Approved by:	Date: 2025-03-06			



Project Manager:	Project No. 86257021	 72 Pointe Cir Greenville, South Carolina 296	AERIAL PHOTO (2015 - USDA)	Appendix
Drawn by:	Scale: 1" = 2000'		Old Greenville Highway Apartments 602 Old Greenville Highway Clemson, South Carolina 29631	C
Checked by:	File Name: 25030600062			
Approved by:	Date: 2025-03-06			




Project Manager:	Project No. 86257021	 72 Pointe Cir Greenville, South Carolina 296	AERIAL PHOTO (2017 - USDA)	Appendix
Drawn by:	Scale: 1" = 2000'		Old Greenville Highway Apartments 602 Old Greenville Highway Clemson, South Carolina 29631	C
Checked by:	File Name: 25030600062			
Approved by:	Date: 2025-03-06			



Project Manager:	Project No. 86257021	 72 Pointe Cir Greenville, South Carolina 296	AERIAL PHOTO (2019 - USDA)	Appendix
Drawn by:	Scale: 1" = 2000'		Old Greenville Highway Apartments 602 Old Greenville Highway Clemson, South Carolina 29631	C
Checked by:	File Name: 25030600062			
Approved by:	Date: 2025-03-06			



Project Manager:	Project No. 86257021	 72 Pointe Cir Greenville, South Carolina 296	AERIAL PHOTO (2021 - USDA)	Appendix
Drawn by:	Scale: 1" = 2000'		Old Greenville Highway Apartments 602 Old Greenville Highway Clemson, South Carolina 29631	C
Checked by:	File Name: 25030600062			
Approved by:	Date: 2025-03-06			



Project Manager:	Project No. 86257021	 72 Pointe Cir Greenville, South Carolina 296	AERIAL PHOTO (2023 - MAXAR)	Appendix
Drawn by:	Scale: 1" = 2000'		Old Greenville Highway Apartments 602 Old Greenville Highway Clemson, South Carolina 29631	C
Checked by:	File Name: 25030600062			
Approved by:	Date: 2025-03-06			